

Telephone: +27 (0) 8600 BLAST

Email: sales@blastrite.com

www.blastrite.com

STEEL SHOT

TRADE NAME
DESCRIPTION

STEEL SHOT

Steel Shot is a fully heat-treated spherical product of hyper-eutectoid steel. It has a uniform structure of finely tempered martensite to provide optimum resilience and resistance to fatigue. The microstructure of steel shot is uniform martensite, tempered to a degree consistent with the hardness range, with fine, well distributed carbides, if any.

FUNCTION

Typical applications include: preparation of metal surfaces prior to subsequent coating, removal of sand from castings, descaling of steel strips, bars, pipes, shot peening, etc. Industry users include: foundries, automotive, aviation, blast/paint contractors, pipeline manufacturers, steel fabricators.

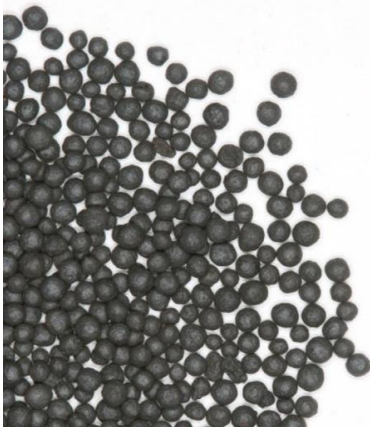
TYPICAL CHEMICAL ANALYSIS
(full analysis on application)

Iron (Fe)	>96%
Carbon (C)	0.8 – 1.2%
Silicon (Si)	0.3 – 1.2%
Manganese (Mn)	0.5 – 1.3%
Phosphorus (P)	<0.04%
Sulphur (S)	<0.04%

TECHNICAL DATA

Hardness	40 – 50 Rc // ≥ 390 – 510 HV
Specific weight	7-8
Average bulk density	4.2 kg/l
Particle shape	Round
Storage	Dry, sheltered storage conditions
Packaging	25 kg polyprop bags, 1 ton pallet

SIEVING RANGE



CODE	SIZE RANGE (micron)	PROFILE RANGE (micron)*	PERFORMANCE CHARACTERISTICS
S550	1180 - 2000	120-240	Can be recycled as many as 3000 times before replacement due to its hardness and density. Generates a minimal amount of dust in the blasting process.
S460	1000 - 1700		
S390	840 - 1400	80-160	
S330	710 - 1180	60-120	
S280	600 - 1000	50-100	
S230	500 - 840	40-80	
S170	335 - 710	30-60	
S110	180 - 500	20-40	

**Estimated blast profile ranges*