

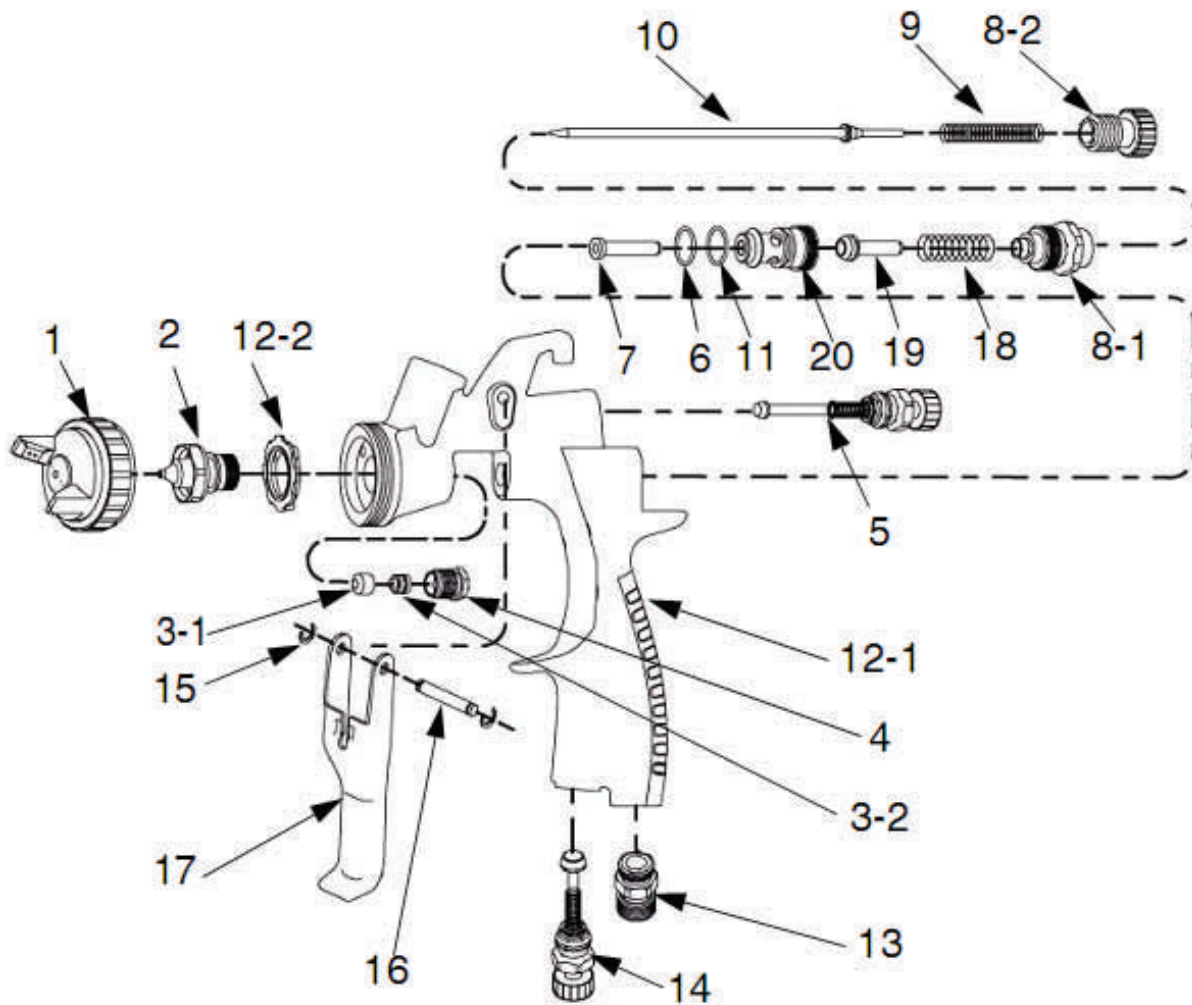


SECTION 12 **SPRAY GUNS**

AIR SPRAY GUNS



| ITEM | PART.NR. | MODEL DESCRIPTION | QTY |
|-------|----------|---|-----|
| | 289255 | FINEX HP | |
| | | PRESSURE FEED CONVENTIONAL WITH 1.8mm NOZZLE | |
| | 289309 | NEEDLE, NOZZLE AIR CAP KIT (incl. 1,2 & 10) | |
| | 288891 | NEEDLE PACKING KIT (incl. 3-1, 3-2 & 4) | |
| | 288897 | GUN REBUILD KIT (incl. parts marked *) | |
| 1 | | CAP, air | (1) |
| 2 | | NOZZLE, fluid | (1) |
| 3-1* | | PACKING, fluid needle | (1) |
| 3-2* | | PACKING, fluid needle | (1) |
| 4* | | NUT, packing | (1) |
| 5* | | KNOB, pattern adjustment | (1) |
| 6* | | O-RING | (1) |
| 7* | | GUIDE, fluid needle | (1) |
| 8-1* | | GUIDE, fluid adjusting | (1) |
| 8-2* | | KNOB, fluid adjusting | (1) |
| 9* | | SPRING, fluid needle | (1) |
| 10 | | NEEDLE, fluid | (1) |
| 11* | | O-RING | (1) |
| 12-1 | | BODY, gun | (1) |
| 12-2* | | DISTRIBUTOR, air | (1) |
| 13* | | FITTING, air inlet | (1) |
| 14* | | VALVE, air adjustment | (1) |
| 15* | | RING, retaining | (2) |
| 16* | | PIN, trigger | (1) |
| 17* | | TRIGGER | (1) |
| 18* | | SPRING, air valve | (1) |
| 19* | | VALVE, air | (1) |
| 20* | | SEAT, air valve | (1) |
| 21 | | CONNECTOR, fluid, (pressure feed models only, not shown) | (1) |



Pressure Feed

XTR -7 AIRLESS SPRAY GUN (7250 psi)

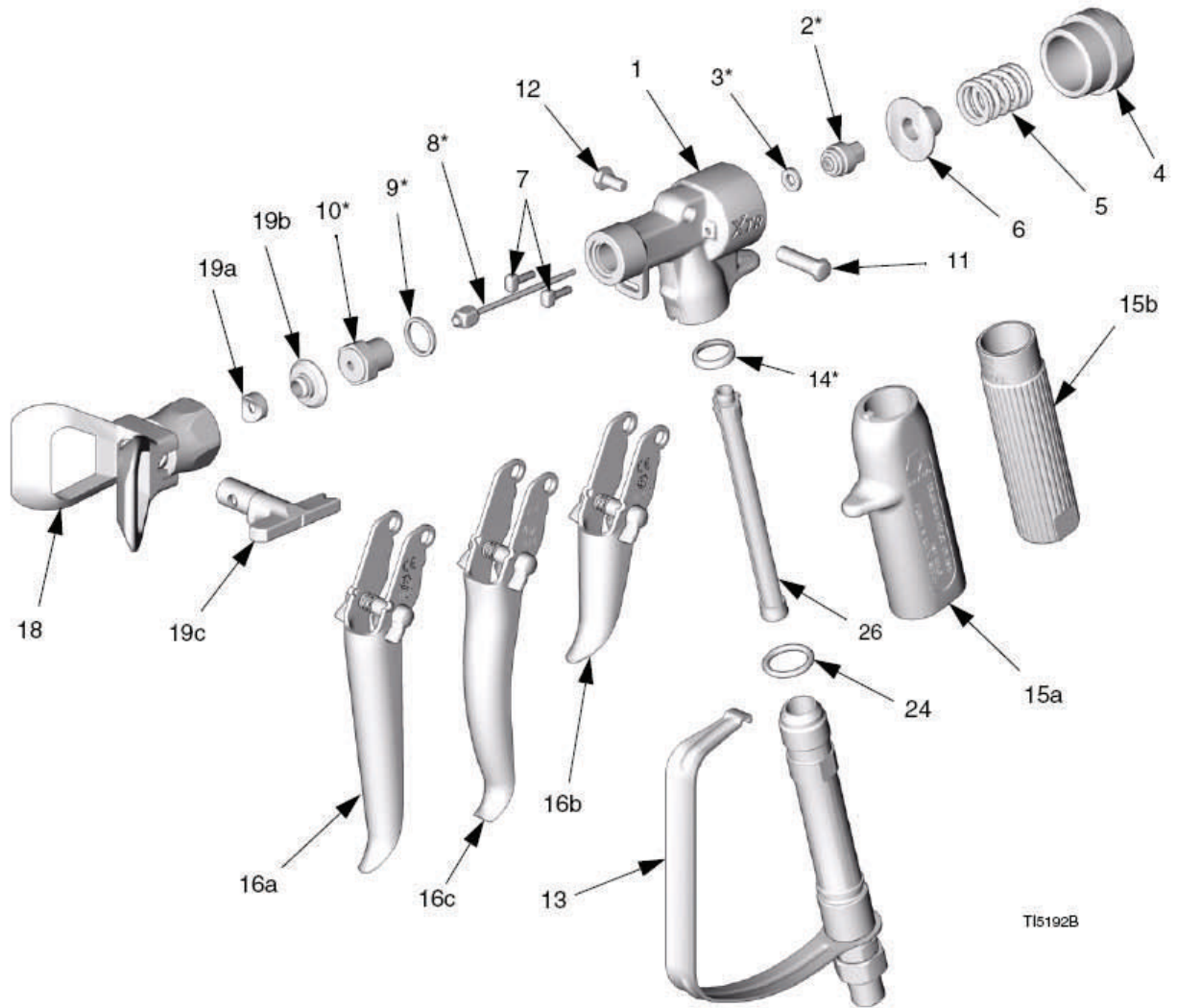


| PART.NR. | MODEL | DESCRIPTION | QTY |
|----------|--------|--|-----|
| 101) | XTR700 | Gun Round Handle 4 finger Trigger, no Tip | (1) |
| | XTR702 | Gun Oval Insulated Handle 4 finger Trigger, with Tip (519) | (1) |
| | XTR703 | Gun Oval Insulated Handle 2 finger Trigger, with Tip (519) | (1) |
| | XTR704 | Gun Round Handle 4 finger Trigger, with Tip (519) | (1) |
| | XTR705 | Gun Round Handle 4 finger Trigger, with Tip (519) | (1) |

| Ref. No. | Part No. | Description | Qty. | Ref. No. | Part No. | Description | Qty. |
|----------|----------|---|------|----------|---|---|------|
| 1 | 15E178 | BODY, gun | 1 | | | | |
| 2* | 245881 | SEAL, retainer assembly | 1 | 24 | 119740 | O-RING, packing (included with item 13) | 1 |
| 3* | - | GASKET | 1 | 26 | 287032 | FILTER, 60 mesh (included with gun) | 1 |
| 4 | 15A864 | CAP, end | 1 | | 287033 | FILTER, 100 mesh | |
| 5 | 117350 | SPRING, compression | 1 | | 287034 | FILTER, 60 and 100 mesh combo | |
| 6 | 15E088 | RETAINER, needle | 1 | | | | |
| 7 | 15E085 | PIN, actuator | 2 | | | | |
| 8* | 248591 | STEM, valve | 1 | | | | |
| 9* | 156766 | GASKET | 1 | 29 | 222385 | WARNING CARD | 1 |
| 10* | 245858 | SEAT, valve | 1 | 34 | 187346 | WARNING TAG | 1 |
| 11† | 192272 | PIN, pivot (included with items 16a, 16b, 16c) | 1 | 35* | 194744 | TOOL, installation, packing | 1 |
| 12† | 203953 | SCREW, cap hex hd (included with items 16a, 16b, 16c) | 1 | | | | |
| 13 | 248952 | HANDLE, tube assembly (includes item 24) swivel included, not sold separately | 1 | | | | |
| 14* | 179733 | SEAL, sleeve | 1 | * | Parts included in Repair Kit 248837, purchases separately. Installation tool (35) included. | | |
| 15a | 276997 | HANDLE, gun (see table below) | 1 | | | | |
| 15b | 15E083 | HANDLE, gun (see table below) | 1 | | | | |
| 16a† | 287449 | TRIGGER (see table below) | 1 | | | Replacement Danger and Warning labels, tags and cards are not available at no cost. | |
| 16b† | 287450 | TRIGGER (see table below) | 1 | | | | |
| 16c† | 287451 | TRIGGER (see table below) | 1 | | | | |
| 18 | XHD001 | XHD RAC Guard for pressures up to 500 bar (50.0 MPa, 7250 psi) | 1 | † | Parts included in Kit 287449 (16a), 287450 (16b) and 287451 (16c), purchased separately. | | |
| 19 | XHDxxx | XHD RAC SWITCH, tip 519 size (includes items 19a - 19c) | 1 | | | | |
| 19a | - | SEAL, fluid | 1 | | | | |
| 19b | - | GASKET | 1 | | | | |
| 19c | - | TIP, spray | 1 | | | | |

| Gun Part No. | Reference Nos. | | | | | |
|--------------|----------------|-----|-----|-----|-----|----|
| | 15a | 15b | 16a | 16b | 16c | 19 |
| XTR700 | | ✓ | ✓ | | | |
| XTR702 | ✓ | | | | ✓ | ✓ |
| XTR703 | ✓ | | | ✓ | | ✓ |
| XTR704 | | ✓ | ✓ | | | ✓ |
| XTR705 | | ✓ | | ✓ | | ✓ |

Note: All part numbers start with EQP-SP –
Therefore SAGE reference to Part no. XTR700 is EQP-SP-XTR700



T15192B



POLE GUN WITH CLEANSHOT SHUT-OFF VALVE



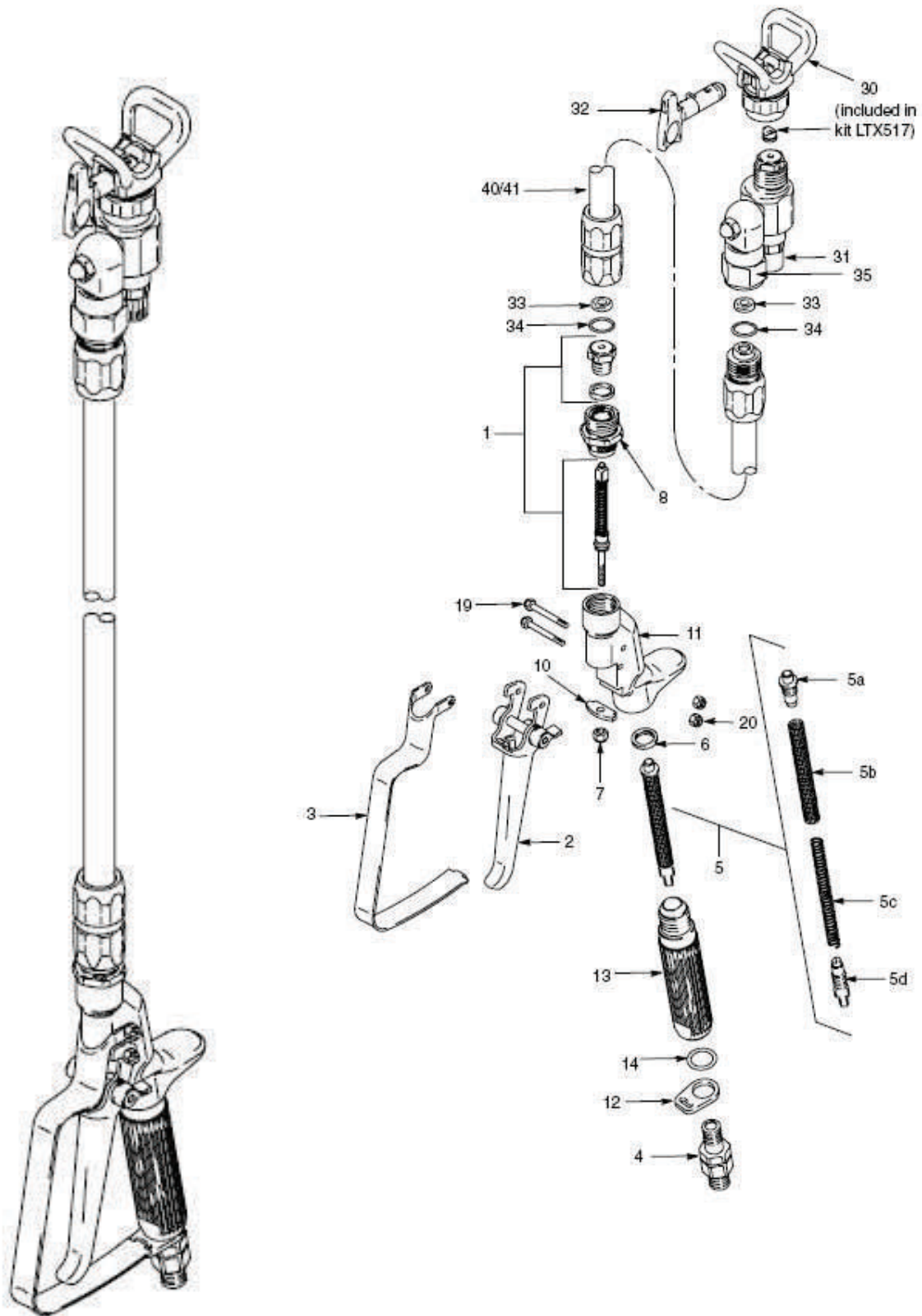
| PART.NR. | MODEL | DESCRIPTION | QTY |
|-----------------|-----------------|--|------------|
| 287030 | | CLEANSHOT SHUT-OFF VALVE | |
| Ref. No. | Part No. | Description | Qty |
| 1 | 218070 | NEEDLE-DIFFUSER / SEAL KIT | 1 |
| 2 | 244193 | TRIGGER, gun, inline | 1 |
| 3 | 196869 | GUARD, trigger | 1 |
| 4 | 238817 | KIT, swivel 1 | 1 |
| 5 ✓ | 218131 | FLUID FILTER ASSEMBLY (standard 50 mesh) includes replacement parts 5a, 5b, 5c, 5d | 1 |
| 5a | 179722 | RETAINER, spring | 1 |
| 5b | 179731 | ELEMENT, strainer | 1 |
| 5c | 179763 | SPRING, compression | 1 |
| 5d | 179750 | RETAINER, spring | 1 |
| 6 ✓ | 179733 | SEAL, sleeve | 1 |
| 7 | 107110 | LOCKNUT | 1 |
| 8 | 197052 | ADAPTER, RAC | 1 |
| 10 | 197058 | BRACKET, stem | 1 |
| 11 | 197568 | HOUSING, fluid, locking (North America / Asia) | 1 |
| | 196828 | HOUSING, fluid, locking (Europe) | 1 |
| 12 | 113409 | RETAINER, guard | 1 |
| 13 | 195788 | HANDLE, gun (North America / Europe) | 1 |
| | 243393 | HANDLE, gun (Asia) | 1 |
| 14 | 104938 | PACKING, o-ring | 1 |
| 19 | 177538 | STUD, trigger | 2 |
| 20 | 105334 | NUT, lock, hex | 2 |
| 21 | 222385 | WARNING CARD (not shown) | 1 |
| 23 | 187348 | COVER, warning | 1 |

Replacement Danger and Warning labels, tags and cards are available at no cost.

✓ Keep these spare parts on hand to reduce down time.

Part number provided for reference only. Not available as a replacement part.

Note: All part numbers start with EQP-SP – Therefore SAGE reference to Part no. 287030 is EQP-SP-287030



CLEANSHOT SHUT-OFF VALVE



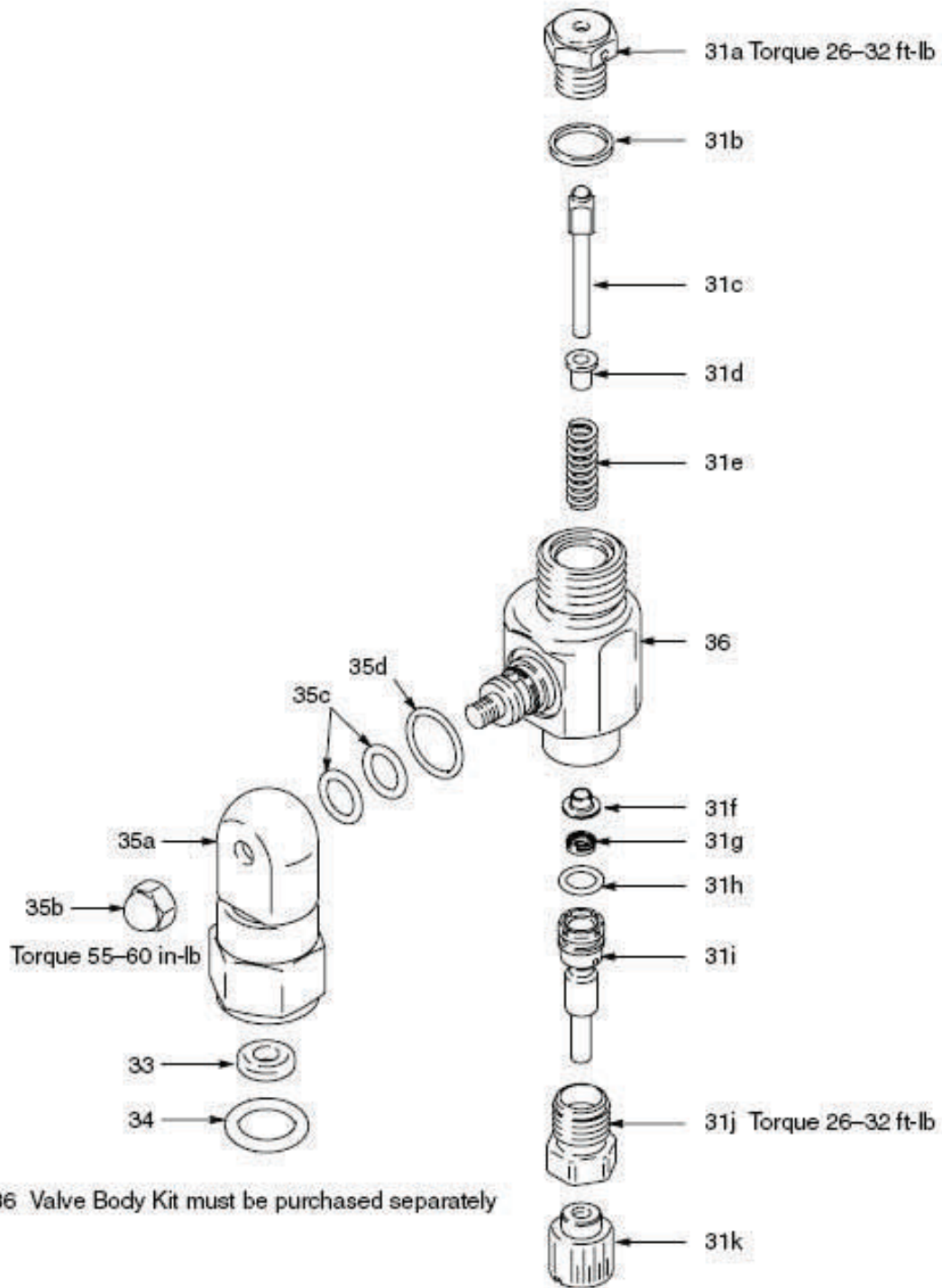
| PART.NR. | MODEL | DESCRIPTION | QTY |
|----------|-------|-------------|-----|
|----------|-------|-------------|-----|

244162

CLEANSHOT SHUT-OFF VALVE

| Ref. No. | Part No. | Description | Qty. |
|----------|----------|------------------------|------|
| 31a | | SEAT, valve | (1) |
| 31b | | GASKET | (1) |
| 31c | | RETAINER, ball | (1) |
| 31d | | DAMPENER, spring | (1) |
| 31e | | SPRING, compression | (1) |
| 31f | | GUIDE, spring | (1) |
| 31g | | SEAL, u-cup | (1) |
| 31h | | PACKING, o-ring | (1) |
| 31i | | RETAINER, u-cup | (1) |
| 31j | | CAP, end, u-cup | (1) |
| 31k | | KNOB, valve | (1) |
| 35a | | SWIVEL, inlet assembly | (1) |
| 35b | | NUT, cap | (1) |
| 35c | | PACKING, o-ring | (2) |
| 35d | | PACKING, o-ring | (1) |
| 36 | 245687 | KIT, Valve body | (1) |

Note: All part numbers start with EQP-SP –
Therefore SAGE reference to Part no. 244162 is EQP-SP-244162



SLIVER PLUS SPRAY GUN



| PART.NR. | MODEL | DESCRIPTION | QTY |
|-------------------------|--------|--------------------------------------|-------------|
| 246240 | | SILVER PLUS SPRAY GUN | |
| Ref No. Part No. | | | |
| | | Description | Qty. |
| 2 | 235474 | NEEDLE KIT - includes items 2a to 2c | (1) |
| 2a* | | DIFFUSER/SEAT | (1) |
| 2b* | | GASKET, copper | (1) |
| 2c* | | NEEDLE | (1) |
| 6 | 235482 | FLUID HOUSING, two finger | (1) |
| 8 | 187985 | TRIGGER, two finger | (1) |
| 9 | 102207 | SETSCREW, 1/3-20 | (1) |
| 10 | 187965 | PIVOT PIN | (1) |
| 11 | 235471 | GUN HANDLE | (1) |
| 12 | 203953 | SCREW, hex washer hd, 10-24 | (1) |
| 13 | 107091 | SCREW, 1/4 - 20 | (2) |
| 14 | 187987 | WARNING TAG not shown | (1) |
| 15 | 222385 | WARNING CARD not shown | (1) |
| 21 | 246215 | HandTite Tip Guard | (1) |
| 22 | LTX517 | RAC X Switch Tip, Size 517 | (1) |
| 23 | 246453 | OneSeal (5-pack) | (1) |

Note: All part numbers start with EQP-SP –
Therefore SAGE reference to Part no. 244162 is EQP-SP-246240

