

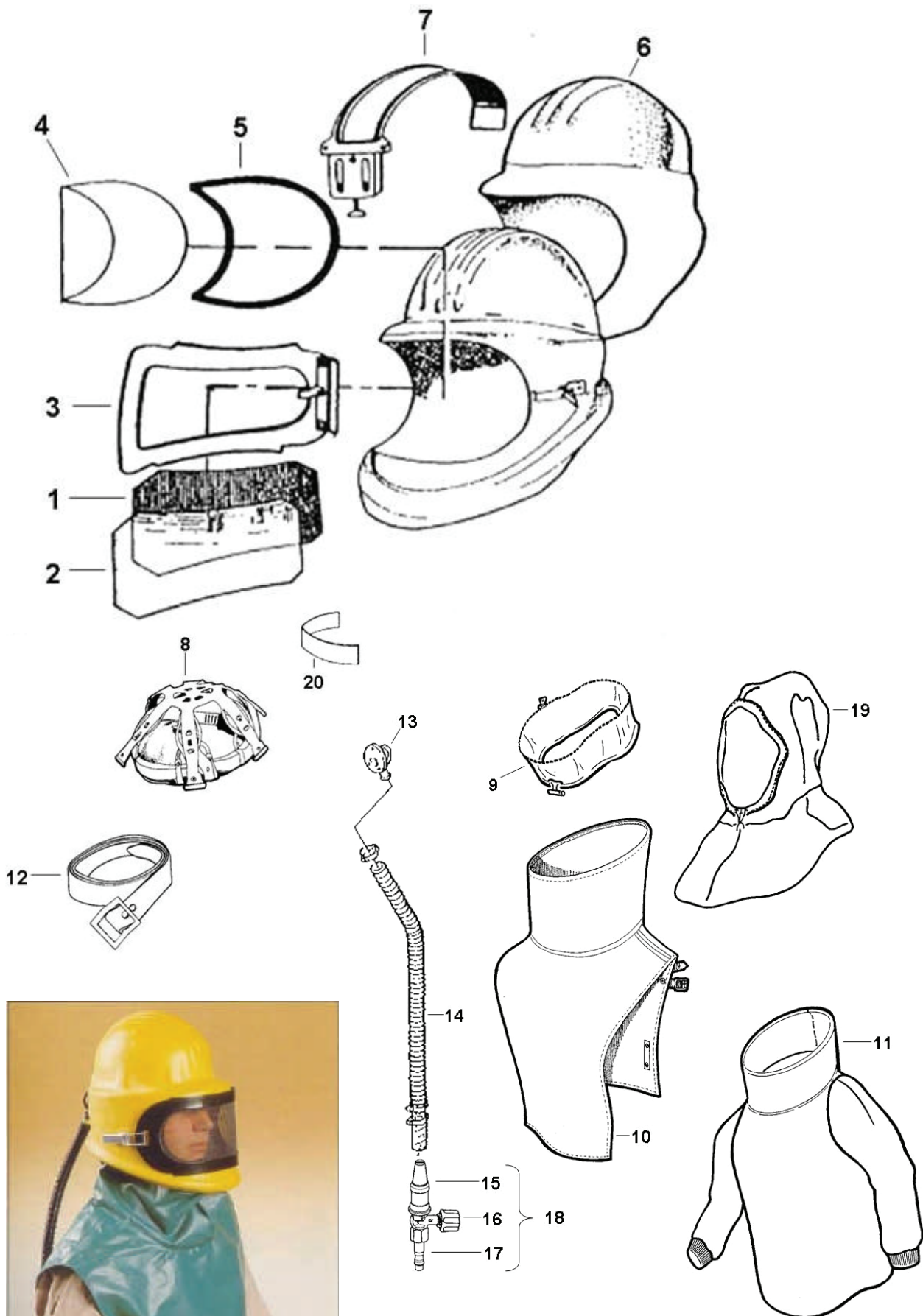


SECTION 10 **BLASTING
SAFETY
EQUIPMENT**

EXTREME SANDBLAST HELMET PANORAMA



PART.NR.	MODEL	DESCRIPTION
40010	PANORAMA I	<p>PANORAMA AIR SUPPLIED HELMET, COMPLETE Wide view, polycarbonate window (300 x 120 mm). Standard supplied with sound silencer, heavy duty waist length plastic cape. CE-approved Weight on head: 1500 g</p> <p>Spare parts for PANORAMA HELMET:</p>
01) 40020		Wire mesh screen, 345 x 125 mm
02) 40030		Disposable acetate window, 343 x 130
03) 40060		Window frame assembly type Panorama
04) 40050		Polycarbonate window, 300 x 120 x 1 mm
05) 40040		Rubber window gasket type Panorama
06) 40070		Rubber helmet cover type Panorama
07) 40080		Baffle plate with filter mat and air flow indicator
08) 40280		Adjustable headband with brow pad
09) 40110		Neck bib
10) 40120		Cape type Panorama (plastic - green)
40121		Cape type Panorama (leather)
11) 40540		Blouse type Panorama (cotton)
40541		Blouse type Panorama (leather)
12) 40150		Waist belt type A
13) 40130		Adaptor
14) 40140		Corrugated hose 16 mm bore
15) 40180		Silencer type P
16) 40190		Airflow regulator
17) 40191		Nipple CEJN with ¼" inner thread
18) 40196		Coupling, regulator and silencer
19) 40553		Cotton comfort hood
20) 40198		Self-adhesive sweatband



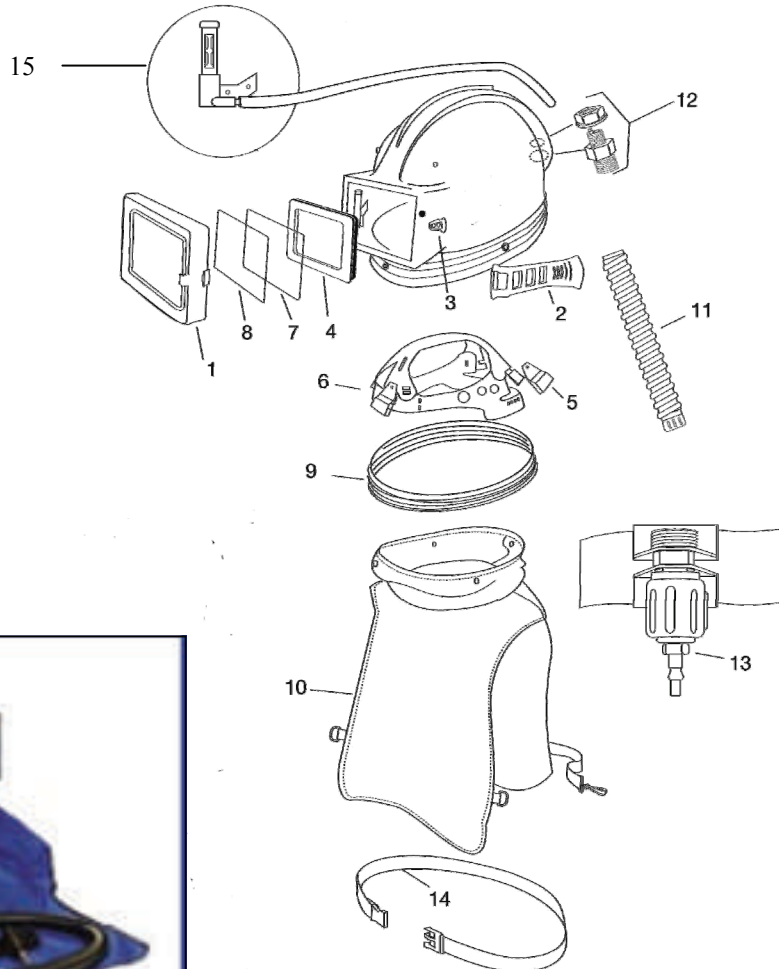
SANDBLAST HELMET ASTRO



PART.NR.	MODEL	DESCRIPTION
02-800CE	ASTRO-I	AIR SUPPLIED BLAST HELMET, COMPLETE With Nylon Cape, Breathing Tube, Flow Control Valve Assembly and Low Flow Indicator.
02-800	ASTRO-II	AIR SUPPLIED BLAST HELMET, COMPLETE With Nylon Cape, Breathing Tube and Flow Control Valve Assembly

Spare parts for ASTRO HELMET:

- | | | | |
|-----|---------|--------|----------------------------|
| 01) | 46003 | 02-804 | Visor |
| 02) | 46004 | 02-805 | Visor strap |
| 03) | 46005 | 02-806 | Cleat |
| 04) | 46006 | 02-807 | Gasket seal |
| 05) | 46007 | 02-808 | Suspension clip (set of 4) |
| 06) | 46008 | 02-809 | Head harness |
| 07) | 46009 | 02-810 | Inner lens (set of 10) |
| 08) | 46010 | 02-811 | Outer lens (set of 50) |
| 09) | 46011 | 02-812 | Cape coverband |
| 10) | 46012 | 02-813 | Cape - nylon |
| 11) | 46014 | NV2021 | Breathing tube |
| 12) | 46015 | | Air inlet assembly |
| 13) | 46016 | | Flow control valve |
| 14) | 46017 | | Belt and buckle |
| 15) | NV 2030 | | Low Flow indicator |





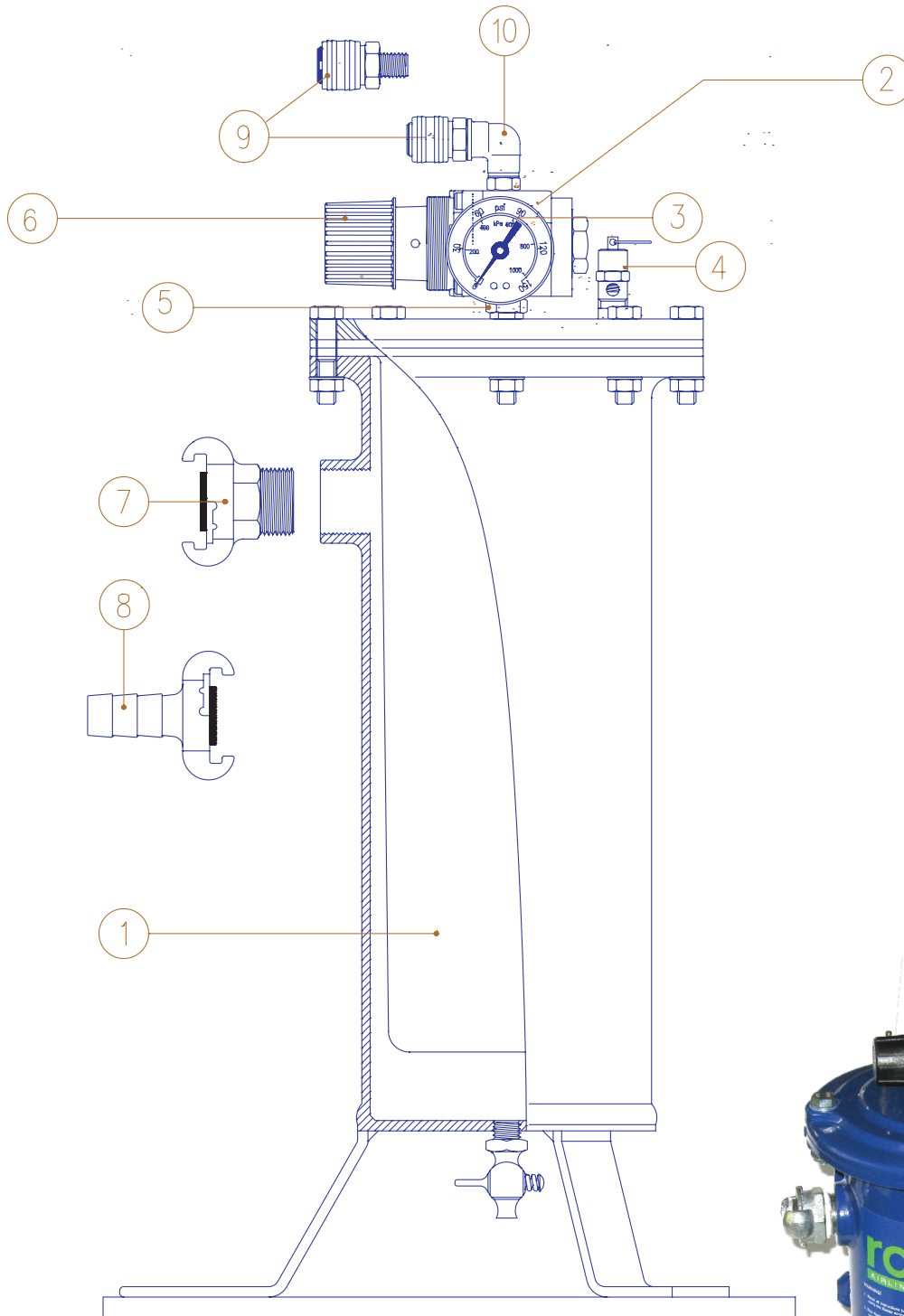
AIRLINE-SERIES HELMET AIR FILTER WITH FILTER CARTRIDGE



PART.NR.	MODEL	DESCRIPTION
42500	41A	HELMET AIR FILTER, Bare Single outlet filter excluding pressure regulator, relief valve and all couplings.
42501	41P2	HELMET AIR FILTER, For one or two users Double outlet filter includes pressure regulator, relief valve and all couplings.
42502	41P6	HELMET AIR FILTER, Bare, Max. six users 6-Outlet Manifold on standard 41A vessel. Includes pressure regulator, relief valve, excluding all couplings.
42502.3		HELMET AIR FILTER, Complete for three users Includes Helmet Air Filter Model 41P6 with 3 quick connect couplings, pressure regulator, gauge, relief valve, 1" outside thread claw coupling.
42502.4		HELMET AIR FILTER, Complete for four users Executed as 42502.3 with 4 quick connect couplings.
42502.5		HELMET AIR FILTER, Complete for five users Executed as 42502.3 with 5 quick connect couplings.
42502.6		HELMET AIR FILTER, Complete for six users Executed as 42502.3 with 6 quick connect couplings.
42503	41P6 /WM	HELMET AIR FILTER ON WALL MOUNT BRACKET, Bare, Max. six users Executed as 42502 Model 41P6 complete with galvanised steel wall mount bracket (no legs).

SPARE PARTS HELMET AIR FILTER, AIRLINE SERIES

01)	42504	41AF	41AF Filter Cartridge for all models
	42505	41P6M	41P6M Manifold for 41P6, (not shown) includes: regulator, adjustable between 0-100 PSI, relief valve set at 125 PSI and pressure gauge.
02)	42506	41P2R	41P2R Regulator for 41P2, includes: regulator, pressure relief valve and pressure gauge
03)	42507	41RG	41RG Regulator gauge for 41P2 and 41P6 helmet air filters
04)	42508	41PRV	41PRV Pressure relief valve for 41P2 and 41P6 helmet air filters
05)	40982		Nipple $\frac{3}{8}$ " x $\frac{3}{8}$ " to connect 41P2R to filter outlet
06)	42510	41KB	41KB Regulator knob for 41 series air pressure regulators
07)	21704	KAG-10	Quick Coupling 1", outside thread, male
09)	21741	CCC - 14/O	Quick Connect Coupling, Male $\frac{1}{4}$ " thread
10)	73123		Brass Elbow $\frac{1}{4}$ " FM



CLIMATE CONTROL TUBE



PART.NR.	MODEL	DESCRIPTION
----------	-------	-------------

4000-01

Cold Air Tube Assembly



4000-20

Hot Air Tube Assembly



