



*SECTION 6*    **VACUUM  
SYSTEMS**

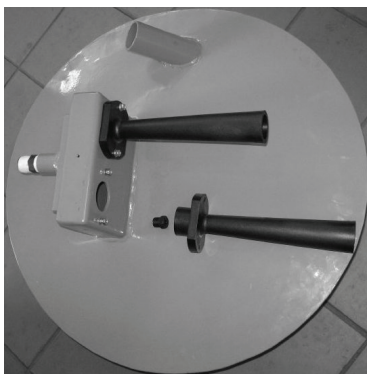
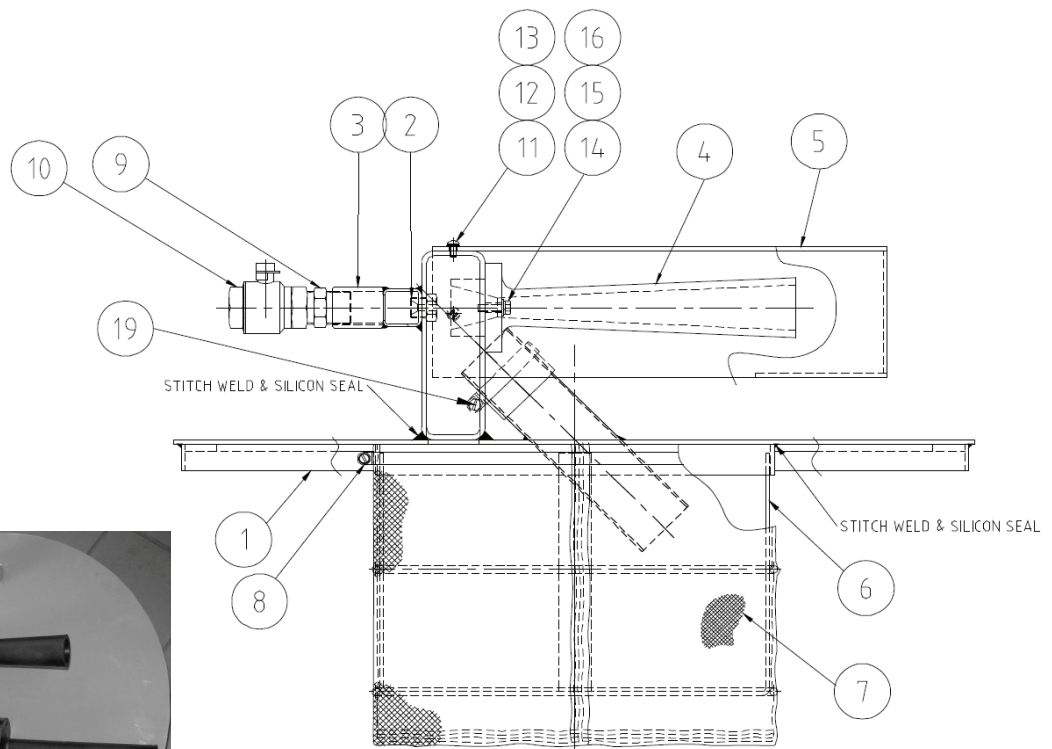


# 55 GALLON DUAL VACUUM HEAD



PART.NR.	MODEL	DESCRIPTION	QTY
<b>AV-55-2010H</b>	<b>55 Gallon</b>	<b>Vacuum Head Only with 2" Hose Connection Input: 150 CFM &amp; 7 bar / Output: 0.58 bar Vacuum</b>	
01)	RV-PB-0002	Lid	1
02)	RV-PB-0003	Jet	2
03)	RV-PB-0004	Manifold	1
04)	RV-PB-0005	Venturi	2
05)	RV-PB-0006	Venturi Cover	1
06)	RV-PB-0007	Cage	1
07)	RV-PB-0008	Dust Bag	1
08)	FN-PB-0049	Hose Clamp 155-180mm	1
09)	PF-PB-0029	HEX. Nipple 3/4" B.S.P.	1
10)	PF-PB-0004	Ball Valve 19mm (3/4")	1
11)	FN-PB-0073	Screw Pan Head Slotted M5 x 10mm LG	3
12)	FN-PB-0038	Flat Washer 5mm	3
13)	FN-PB-0051	Spring Washer 5mm	3
14)	FN-PB-0005	Bolt M6 x 20mm LG.	4
15)	FN-PB-0007	Flat Washer 6mm	4
16)	FN-PB-0008	Spring Washer 6mm	4

**Note:** All part numbers start with EQP-AB –  
Therefore SAGE reference to Part no. RV-PB -0002 is EQ-AB-RVPB0002



# VACUUM GUN



PART.NR.	MODEL	DESCRIPTION	QTY
<b>J-50 -ASS</b>		Compressed Air Driven Vacuum Gun complete with Elbow, Ball Valve and Claw Coupling	
01)	J-50-01	Delivery Pipe	1
02)	J-50-02	Bolt	8
03)	J-50-03	Washer	2
04)	J-50-04	O-Ring	2
05)	J-50-05	Main Body	1
06)	J-50-06	Nozzle	1
07)	J-50-07	Suction Pipe	1
08)	22752	Reducer Nipple 1/2" - 3/8"	1
09)	21993	Street Elbow 1/2"	1
10)	10900	AP-1 F/M Ball Valve 1/2"	1
11)	21702	KAG-12 Male Claw Coupling 1/2"	1
12)	21640	CQG-0 Rubber Gasket 1	1
J-50		(Items 1-7) Compressed Air Driven Vacuum Gun Body Complete	

Note: All part numbers start with EQP-AB -  
Therefore SAGE reference to Part no. J-50 is EQP-AB-J-50

